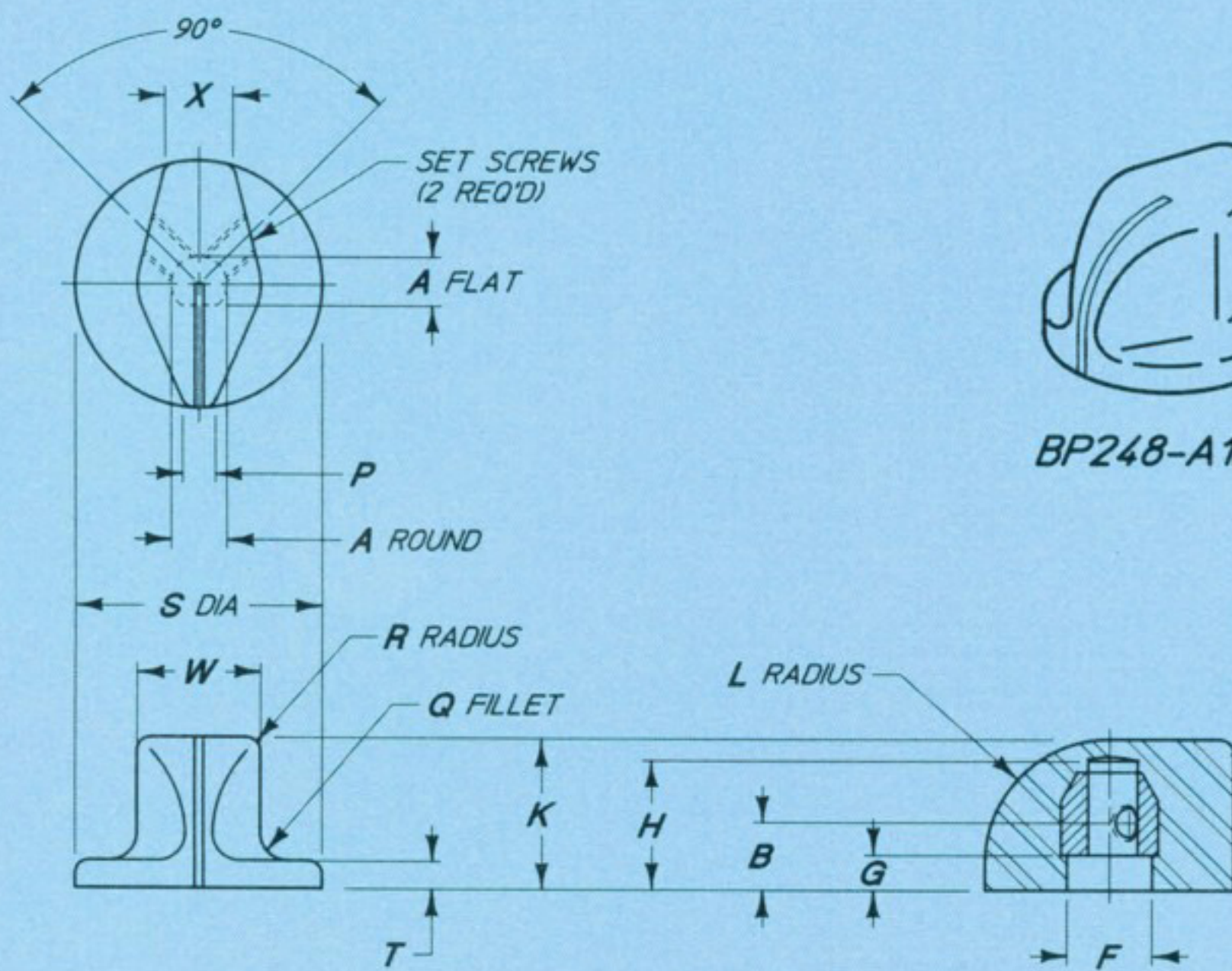


# Korry bar/pointer knobs no. 246 - 250



BP248-A1B2



BP248-A1G2



BP 246



BP 247



BP 248



BP 249



BP 250

PART NO. EXAMPLE: **BP 246 - A 1 B 1**

SERIES	KNOB NO.	MARKING STYLE		MARKING TYPE		COLOR		A - SHAFT HOLE ±.001		
		A	INDICATOR LINE	1	TRANSILLUMINATED	G	GRAY	ROUND	FLAT	
BP	246	A	INDICATOR LINE	1	TRANSILLUMINATED	G	GRAY	1	.128	.108
	247	AV	INDICATOR LINE, NVIS	2	NON-ILLUMINATED	B	BLACK	2	.253	.223
	248	E	CLEAR MARKING					*3	.128	NONE
	249	EV	CLEAR MARKING, NVIS					*4	.253	NONE
	250									

BP246 will not accommodate shaft hole sizes 2 & 4.  
BP249 & BP250 with shaft hole sizes 1 & 3 are non-standard.

KNOB NO.	BRIGHTNESS RATIO ±25%	SET SCREWS		F - C'BORE DIA.		B	G	H	K	L	P	Q	R	S	T	W	X	MAX. WT. OZ.
		SHAFT HOLE SIZE		SHAFT HOLE SIZE														
		1/8	1/4	1/8	1/4													
246	†	MS51021-102		.260		.25	.10	.50	.56	.44	.19	.06	.06	.88	.12	.50	.28	0.20
247	†	MS51021-102	MS51021-131	.260	.385	.31	.16	.53	.62	.50	.13	.12	.06	1.00	.12	.58	.31	0.28
248	†	MS51021-102	MS51021-131	.260	.385	.31	.16	.59	.69	.56	.15	.12	.06	1.12	.12	.56	.31	0.33
249	†		MS51021-132		.385	.31	.16	.68	.79	.62	.13	.12	.09	1.25	.16	.62	.50	0.44
250	†		MS51021-132		.385	.31	.16	.78	.88	.78	.16	.16	.09	1.50	.16	.62	.50	0.55

**SPECIFICATIONS:**

- Material: Thermoplastic molding compound, clear for transilluminated knobs and colored for non-illuminated knobs. Insert is brass per QQ-B-626 (or equivalent).
- Shaft hole diameters conform to MS33743 (except for 3/16 size) to accommodate control shaft diameters conforming to MS33742.
- Finish: Knob, black color no. 37038; gray color no. 36231 per Federal Standard 595. White color no. 37875 per Federal Standard 595 except reflectance may be reduced to 50% minimum. All white markings on gray knobs are surrounded by a black border as shown. Insert is nickel plated per QQ-N-290.
- The daylight contrast of our knobs meets a value of 9 minimum. Contrast (C) is defined as:

$$C = \frac{B_2 - B_1}{B_1}$$

Where B<sub>1</sub> is the average brightness of the black border or background and B<sub>2</sub> is the average brightness of the marking.

- The brightness ratio shown on our drawings is the ratio of average brightness of the illuminated marking on the knob to the average brightness of a standard light source which simulates the knob lighting aperture of an edge lighted panel and is expressed as a decimal. This information may be used by the designer to establish the brightness of the knob lighting apertures of the edge lighted panel.  
† Brightness ratios are omitted from this catalog due to lack of complete data on all listed dash numbers. Document control drawings will include the brightness ratios, as required.
- Brightness ratio does not include markings within .25 radius of center of knob. Brightness values do not apply to non-illuminated knobs.
- Unless otherwise specified, tolerance is ± .02 inch for two place decimal dimensions ± .010 inch for three place decimal dimensions and ±2° for angles.
- Knobs with round shaft holes are not recommended for aircraft applications.