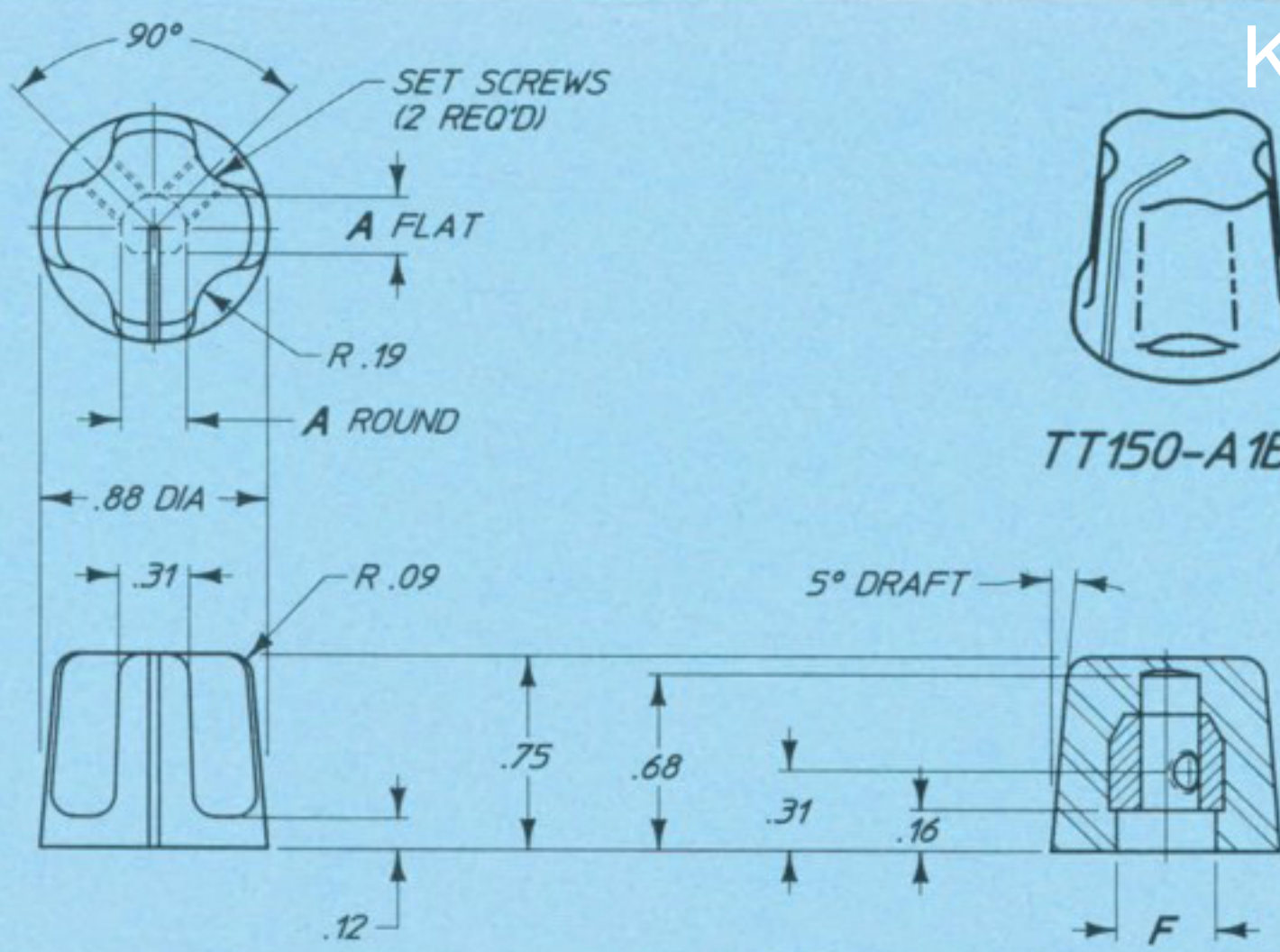


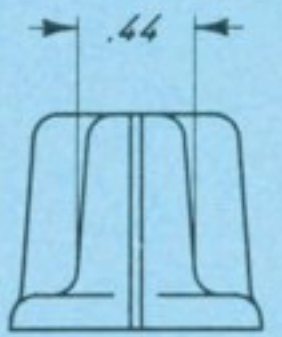
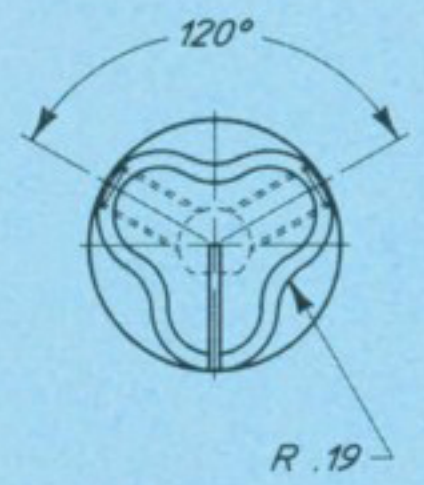
# Korry tacticle knobs no. 150 - 156 and 158



TT150-A1B2

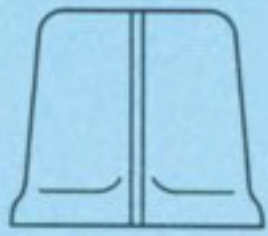
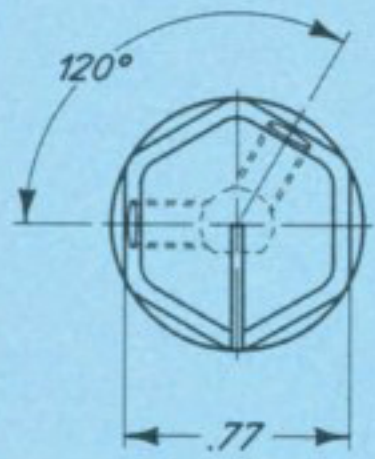


TT150-A1G2

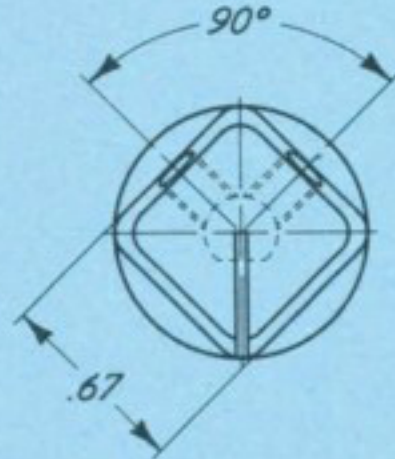


TT 151

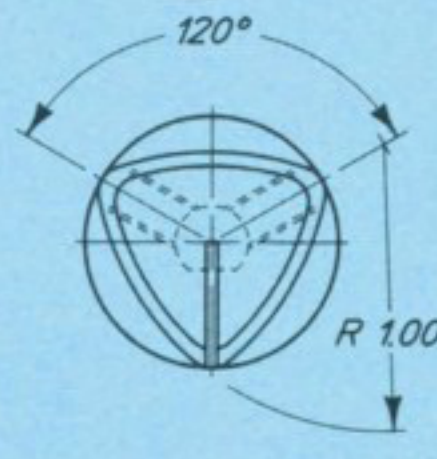
TT 150



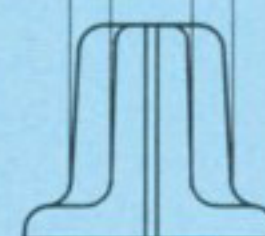
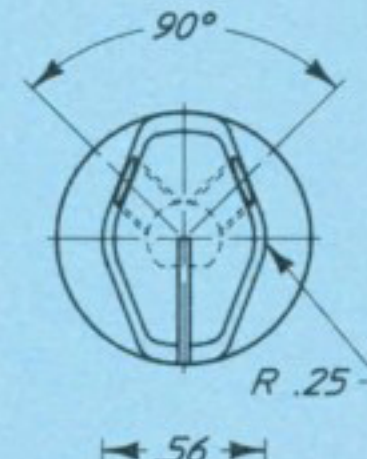
TT 152



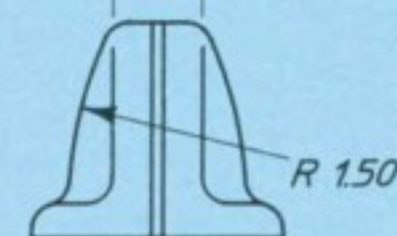
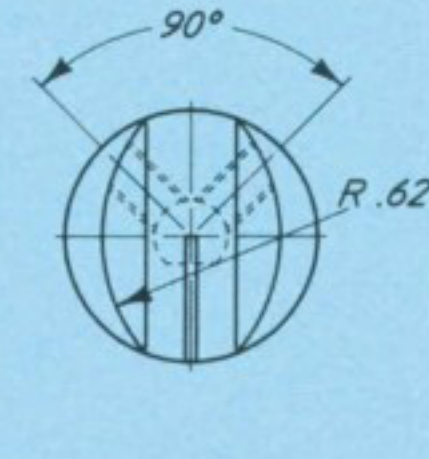
TT 153



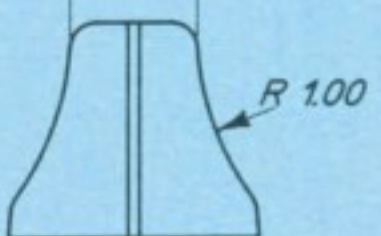
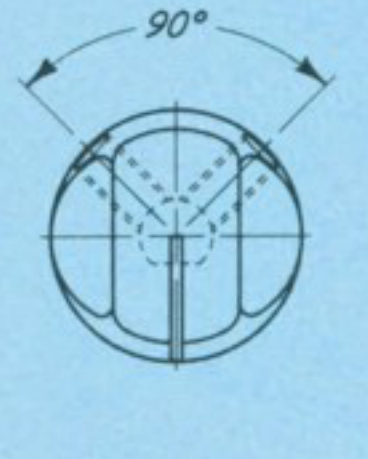
TT 154



TT 155



TT 156



TT 158



TT 150



TT 151



TT 152



TT 153



TT 154



TT 155



TT 156



TT 158

PART NO. EXAMPLE: **TT 150 - A 1 B 1**

SERIES	KNOB NO.	MARKING STYLE	MARKING TYPE	COLOR	A - SHAFT HOLE ±.001	
					ROUND	FLAT
TT	150 154	A INDICATOR LINE	1 TRANSILLUMINATED	G GRAY	1 .128	.108
	151 155	AV INDICATOR LINE, NVIS	2 NON-ILLUMINATED	B BLACK	2 .253	.223
	152 156	E CLEAR MARKING			*3 .128	NONE
	153 158	EV CLEAR MARKING, NVIS			*4 .253	NONE
			N NO MARKING			

(Omit marking type code from part no. of no-marking knobs.)

KNOB NO.	BRIGHTNESS RATIO ±25%	SET SCREWS		F - C'BORE DIA.		MAX. WT. OZ.
		SHAFT HOLE SIZE		SHAFT HOLE SIZE		
		1/8	1/4	1/8	1/4	
150	†	MS51021-102	MS51021-131	.260	.385	0.34
151	†	MS51021-104	MS51021-133	.260	.385	0.32
152	†	MS51021-103	MS51021-132	.260	.385	0.34
153	†	MS51021-102	MS51021-131	.260	.385	0.28
154	†	MS51021-104	MS51021-133	.260	.385	0.32
155	†	MS51021-102	MS51021-131	.260	.385	0.30
156	†	MS51021-103	MS51021-132	.260	.385	0.28
158	†	MS51021-104	MS51021-132	.260	.385	0.35

## SPECIFICATIONS:

- Material: Thermoplastic molding compound, clear for transilluminated knobs and colored for non-illuminated knobs. Insert is brass per QQ-B-626 (or equivalent).
- Shaft hole diameters conform to MS33743 (except for 3/16 size) to accommodate control shaft diameters conforming to MS33742.
- Finish: Knob, black color no. 37038; gray color no. 36231 per Federal Standard 595. White color no. 37875 per Federal Standard 595 except reflectance may be reduced to 50% minimum. All white markings on gray knobs are surrounded by a black border as shown. Insert is nickel plated per QQ-N-290.

- The daylight contrast of our knobs meets a value of 9 minimum. Contrast (C) is defined as:

$$C = \frac{B_2 - B_1}{B_1}$$

Where  $B_1$  is the average brightness of the black border or background and  $B_2$  is the average brightness of the marking.

- The brightness ratio shown on our drawings is the ratio of average brightness of the illuminated marking on the knob to the average brightness of a standard light source which simulates the knob lighting aperture of an edge lighted panel and is expressed as a decimal. This information may be used by the designer to establish the brightness of the knob lighting apertures of the edge lighted panel.
- Brightness ratios are omitted from this catalog due to lack of complete data on all listed dash numbers. Document control drawings will include the brightness ratios, as required.
- Brightness ratio does not include markings within .25 radius of center of knob. Brightness values do not apply to non-illuminated knobs.
- Unless otherwise specified, tolerance is ± .02 inch for two place decimal dimensions ± .010 inch for three place decimal dimensions and ±2° for angles.
- Knobs with round shaft holes are not recommended for aircraft applications.